

Economic Integration with Growth Model Change in East Asia

28 September 2017

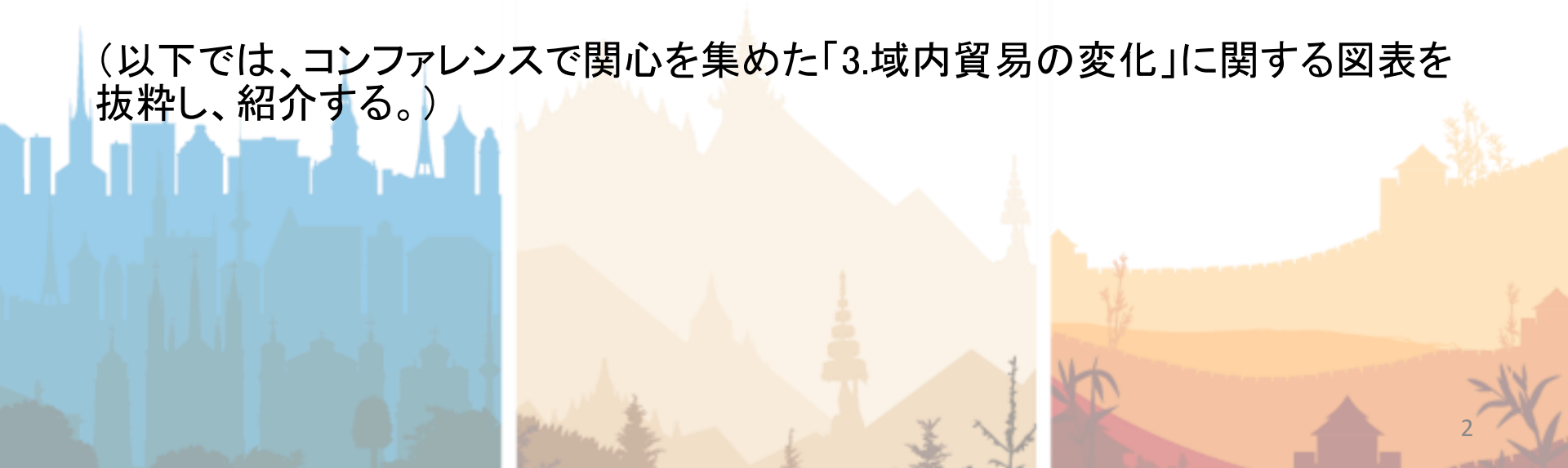
Kumiko OKAZAKI
The Canon Institute for Global Studies



Topics

1. Trend of Economic Growth in East Asia
2. Developing Cross Border Direct Investment in Asia
3. Changes in Intra-Region Trade
4. Challenges and Opportunities to Regional Cooperation

(以下では、コンファレンスで関心を集めた「3.域内貿易の変化」に関する図表を抜粋し、紹介する。)



3. Changes in Intra-Region Trade

Table 1: Increasing intra-region trade in East Asia

(US\$ billion)

[1990]

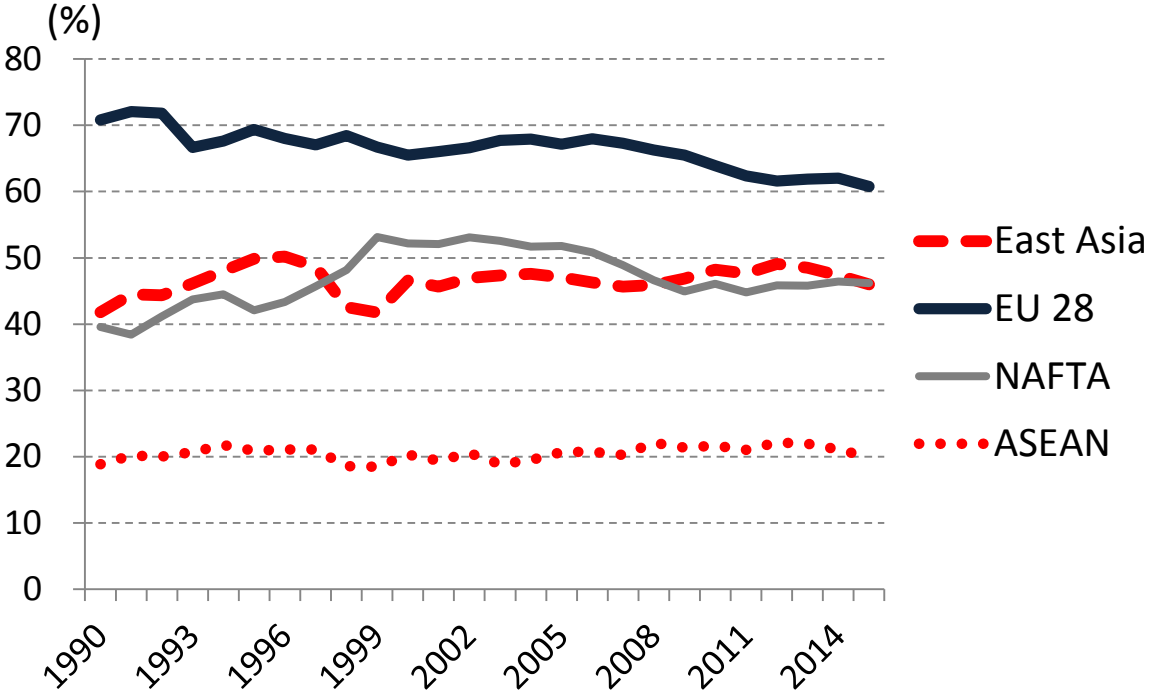
Importer Exporter	World	East Asia	EU 28	NAFTA
World	3,231.2	653.7	1,532.6	640.9
East Asia	695.9	290.9	135.3	206.6
EU 28	1,401.6	98.9	992.3	119.1
NAFTA	532.4	136.1	125.1	210.6

[2015]

Importer Exporter	World	East Asia	EU 28	NAFTA
World	14,608.7	4,069.6	4,713.9	2,894.4
East Asia	4,690.0	2,157.6	674.3	1,022.4
EU 28	4,659.0	492.6	2,830.6	495.7
NAFTA	2,121.6	449.5	342.0	980.1

Source:
RIETI-TID 2015

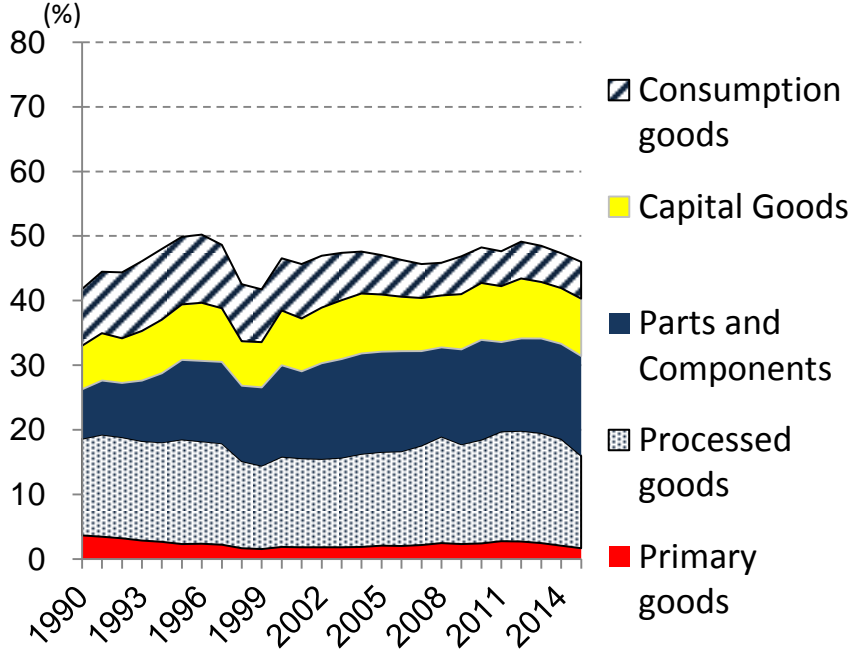
Figure 1: Changes in shares of intra-region trade to total trade



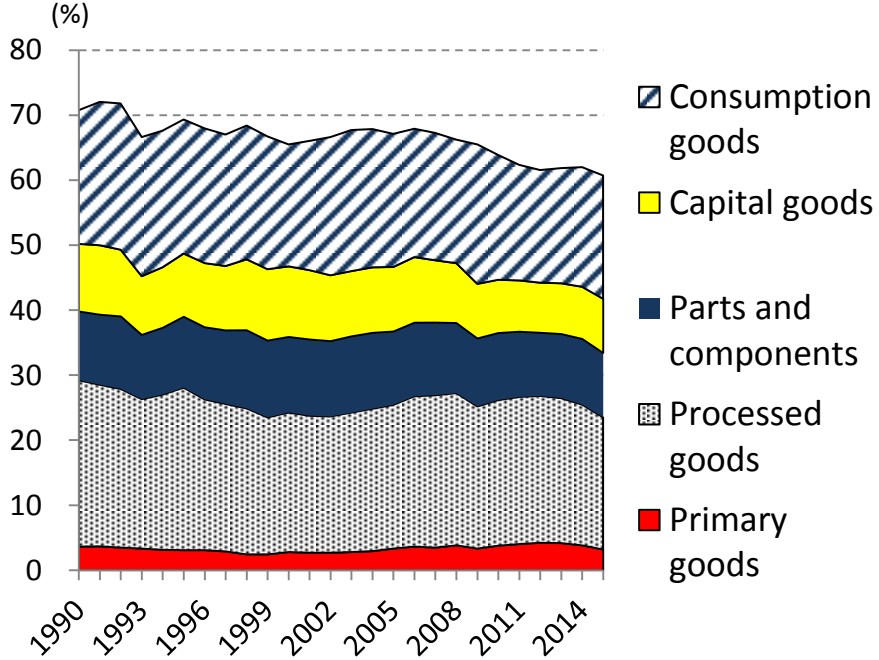
Source: RIETI-TID 2015

Figure 2: Shares of the intra-region trade to total trade by production stage

(1) East Asia



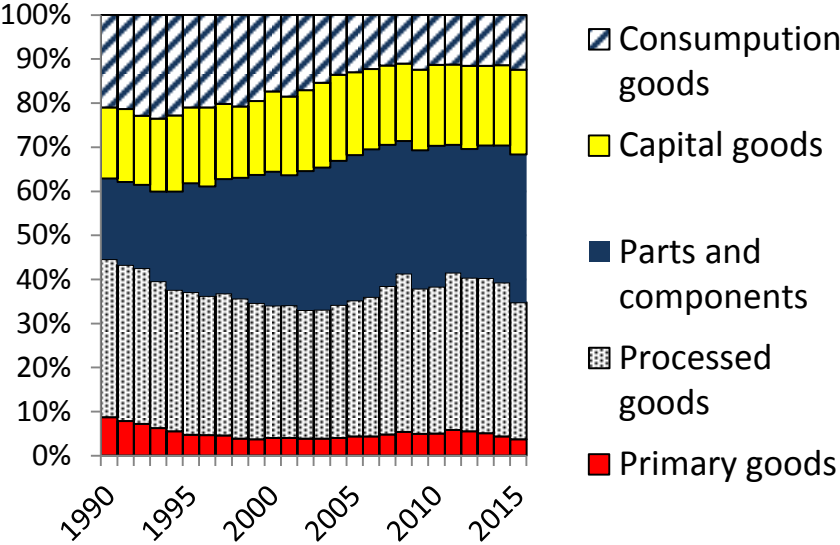
(2) EU 28



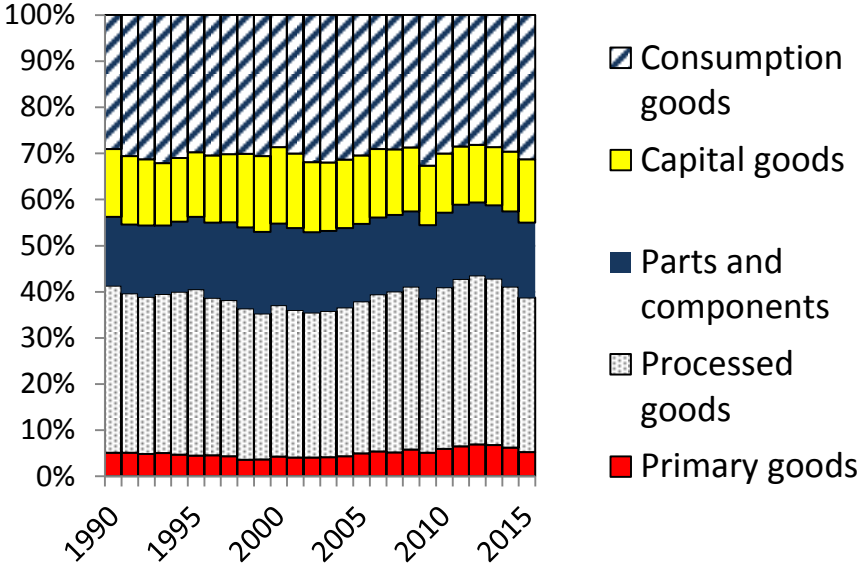
Source: RIETI-TID 2015

Figure 3: Composition of production stages in the intra-region trade

(1) East Asia



(2) EU 28



Source: RIETI-TID 2015

Table 2: Increasing intermediate goods export in East Asia

(1) In 1990

(US\$ billion)

Importer Exporter	World	East Asia	ASEAN	China	Japan	ROK	India	EU 28	USA
World	3,231.2	653.7	156.0	53.4	233.2	71.1	23.7	1,532.6	501.2
East Asia	695.9	290.9	83.1	27.4	64.1	27.1	3.6	135.3	189.4
ASEAN	136.6	74.1	25.8	3.0	29.3	5.1	1.2	23.4	28.0
China	85.9	49.7	4.6	—	11.9	1.5	0.0	14.0	16.1
Japan	294.2	94.7	36.8	8.7	—	18.6	1.6	67.4	92.5
ROK	57.9	22.4	4.9	0.7	11.6	—	0.3	9.6	19.1
India	16.6	4.6	1.4	0.1	2.1	0.3	—	6.2	3.4
EU 28	1,401.6	98.9	24.9	11.3	38.1	9.1	6.7	992.3	99.7
USA	372.6	119.1	22.6	8.1	52.1	16.9	2.4	108.6	—

The numbers on the table show the total export value of the five production stages.

□ R<30%

▨ 30≤R<40%

▤ 40≤R<50%

▥ 50≤R<60%

▧ 60≤R<70%

▨ 70%≤R

R: Percentage of intermediate goods export to total export of each region/country

Source: RIETI-TID 2015

(2) In 2015

(US\$ billion)

Importer Exporter	World	East Asia	ASEAN	China	Japan	ROK	India	EU 28	USA
World	14,608.7	4,069.6	1,008.2	1,353.4	596.9	421.0	367.0	4,713.9	2,133.9
East Asia	4,690.0	2,157.6	640.7	551.4	285.1	185.1	123.4	674.3	832.0
ASEAN	1,106.3	622.4	220.5	171.9	91.9	42.2	39.1	137.4	140.6
China	2,062.5	689.6	196.8	—	149.7	83.5	55.3	379.7	455.3
Japan	672.1	347.0	95.1	137.1	—	45.2	9.1	75.0	126.4
ROK	515.7	293.9	70.7	164.7	25.0	—	11.5	47.2	71.3
India	236.9	53.5	19.0	13.3	4.8	4.2	—	47.0	45.9
EU 28	4,659.0	492.6	99.9	206.6	70.1	56.5	41.4	2,830.6	407.3
USA	1,364.2	387.1	82.9	143.1	66.2	43.7	19.5	293.1	—

The numbers on the table show the total export value of the five production stages.

 $R < 30\%$
 $30 \leq R < 40\%$
 $40 \leq R < 50\%$
 $50 \leq R < 60\%$

 $60 \leq R < 70\%$
 $70 \leq R$

R: Percentage of intermediate goods export to total export of each region/country

Source: RIETI-TID2015