

Reshaping Health Care in the Face of Disruption

CIGS Health Reform Symposium

Charles A. Pohl, MD

Director of Jefferson Japan Center & Vice Provost

Vice Dean and Professor of Pediatrics



Jefferson

Thomas Jefferson University
HOME OF SIDNEY KIMMEL MEDICAL COLLEGE

Who am I?

Jefferson Health

Thomas Jefferson University

6,100 physicians/practitioners

7,400 nurses
(full/part time)

40+ outpatient and
urgent care locations

Over **4.5 million**
patient interactions annually

U.S. News & World Report has ranked Jefferson
(Philadelphia University + Thomas Jefferson University)
among the region's **Most Innovative** and
Best Value Universities



160+ Graduate & Undergraduate programs

64,500 Alumni | **8,400** Students (full/part time)

over **\$136 million**
in public/private research funding

17 NCAA Division II Teams

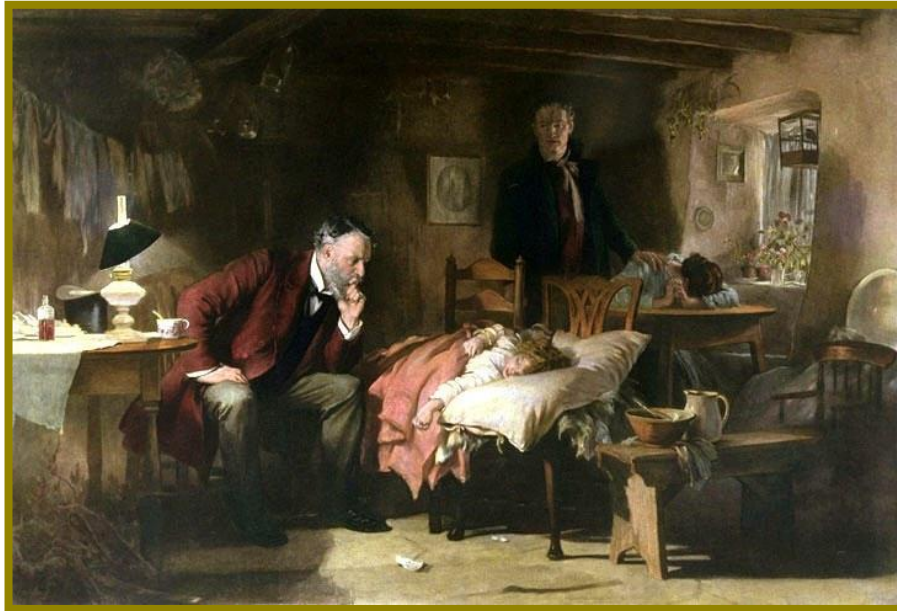
1,000 patents for new drugs, software
innovations, medical devices and
diagnostic tools

Nationally ranked in emergency management,
fashion, graphic design, interior design,
occupational therapy, physician assistant,
primary care, research and strategic leadership

Japanese Gardens



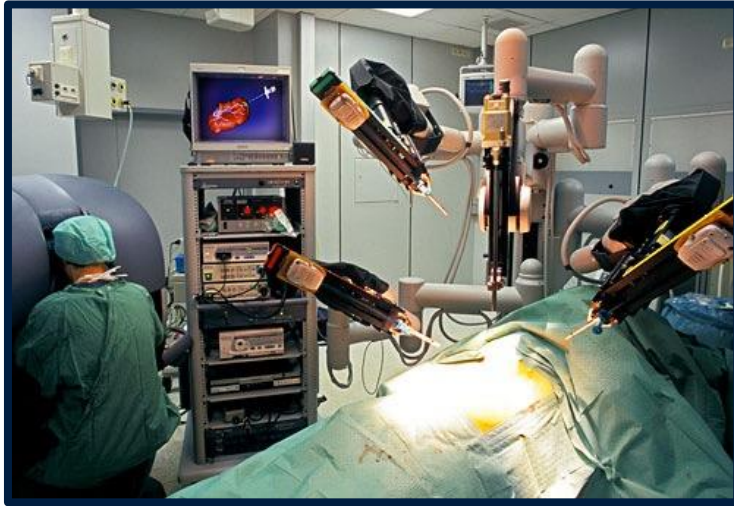
Ecosystem of Health Care



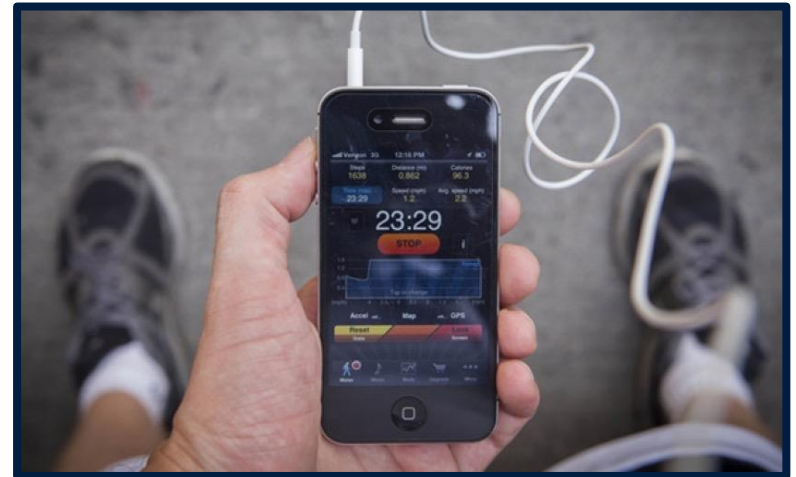
The Doctor
Sir Luke Fildes
1891, Oil & Canvas

- Robust knowledge base
- Clinical skills
- Professionalism
(Bushido of medicine)

Healthcare in the 21st Century



electronicproducts.com

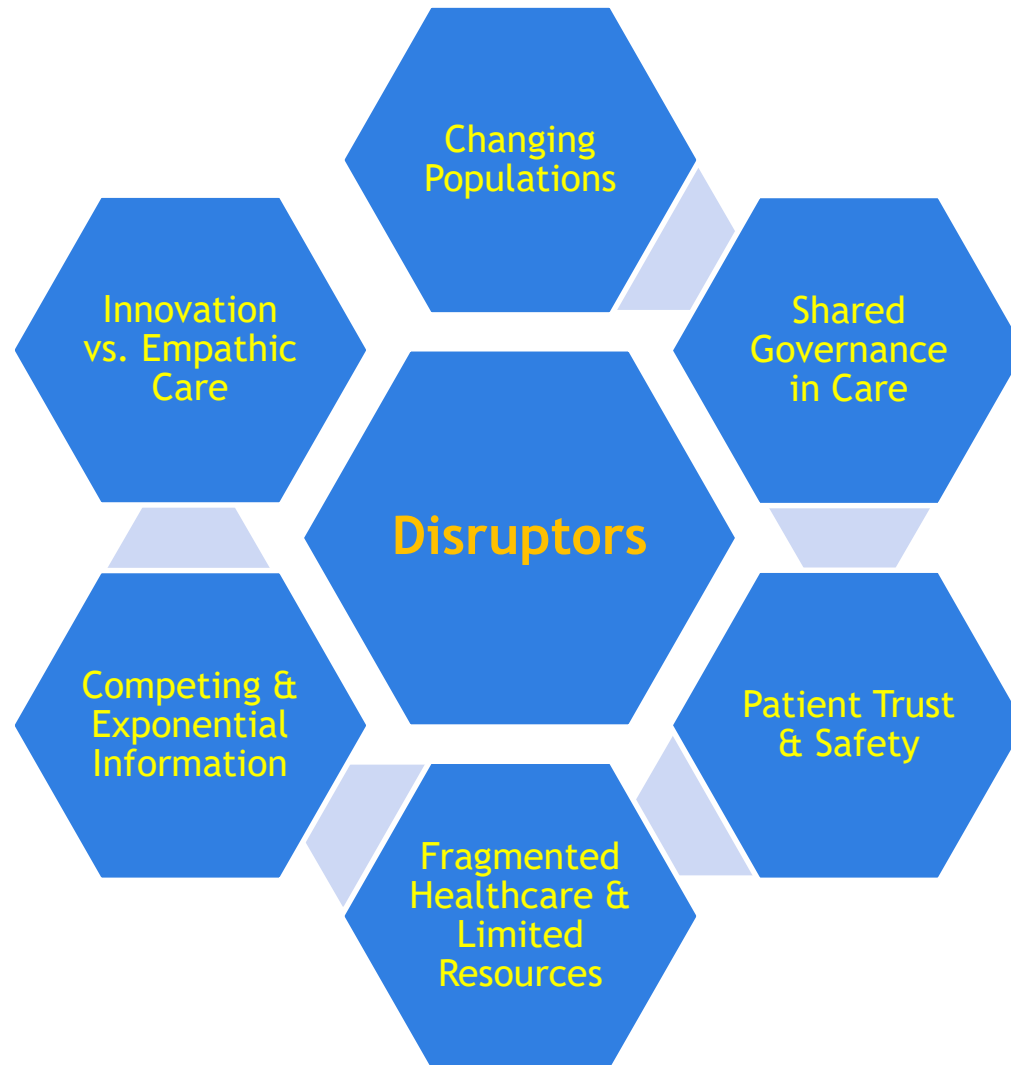


ehealthreporter.com



virtualrounds@jefferson.edu

Healthcare in the 21st Century Disruptors



Healthcare in the 21st Century Disruptors: Shift in Public & Payer Expectations

**High Quality Outcomes;
Patient Safety;
Stellar Patient Experience;
Affordable Cost**

“Triple Aim” – Donald Berwick, MD

Nimble, Engaged, Integrated Healthcare System

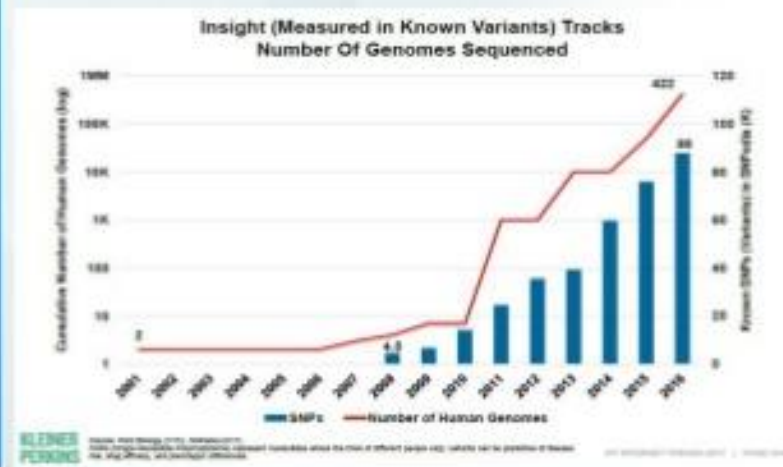
- Patient-Centered
- Responsive to changing landscape
- Ensures empathic, compassionate care
- Delivers high quality care at an affordable cost

Healthcare in the 21st Century Disruptors: Exponential Expansion of Knowledge

Medical Research / Knowledge
doubling every 3.5 Years...

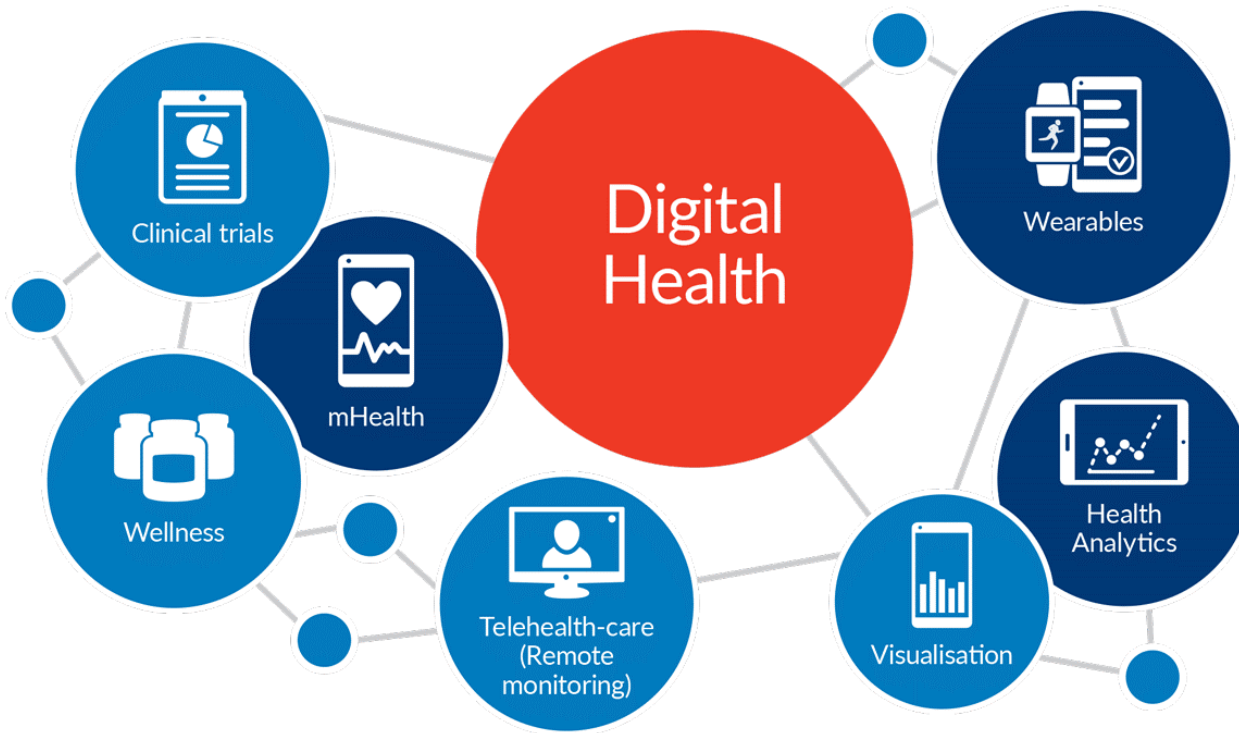


19x Increase in genomic
knowledge...



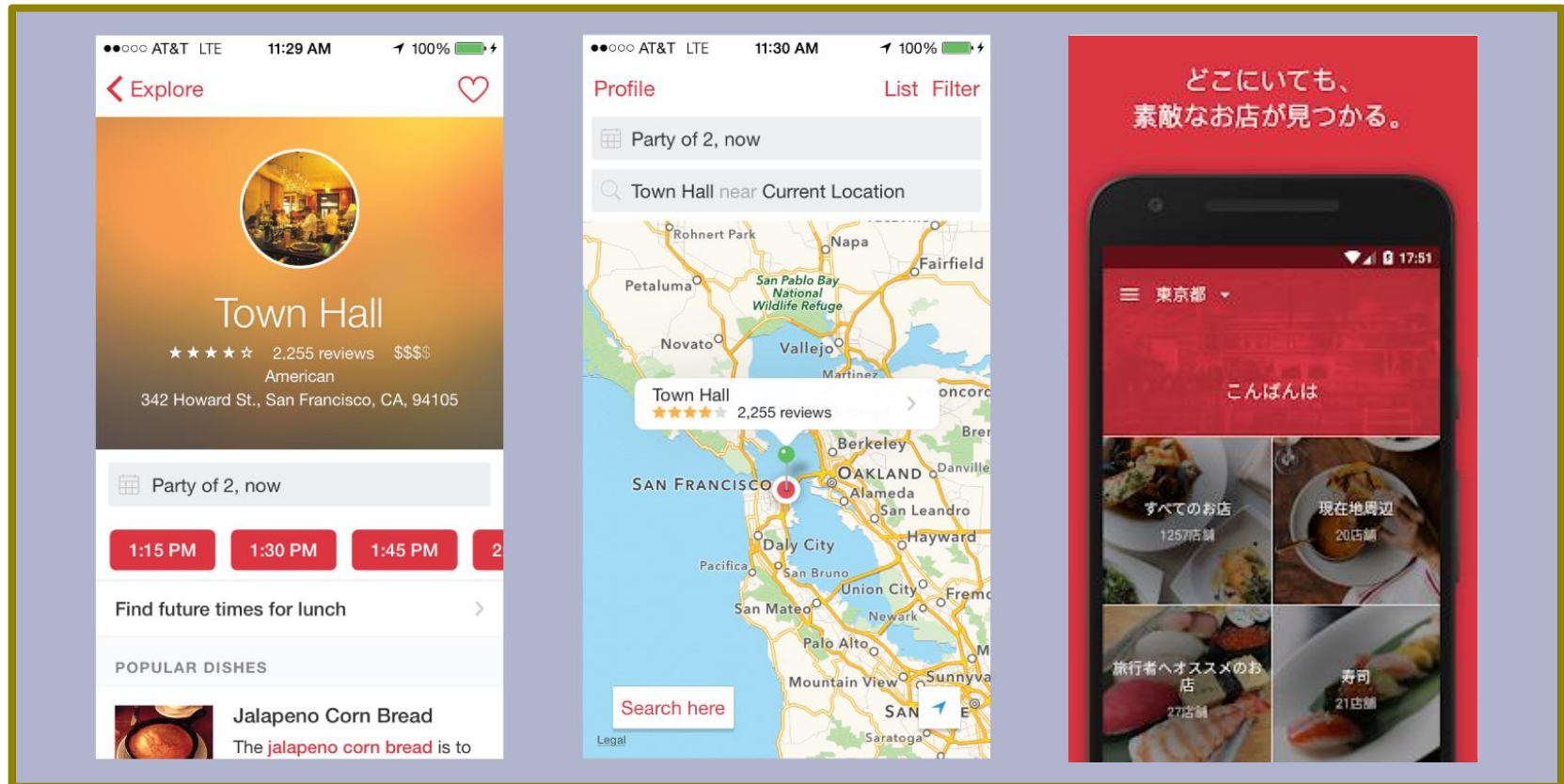
Source: National Institutes of Health, U.S. National Library of Medicine ("Challenges and Opportunities Facing Medical Education"
(Densen, Peter) Transactions of the American Clinical and Climatological Association (1/10) *Based on cumulative number of published medical citations on PubMed,
**Based on peer-reviewed article on challenges in medical education, Internet trends 2017 Mary Meeker May 31, 2017

Healthcare in the 21st Century Disruptors: Digital Health (Technology & Healthcare)



halcyongroup.eu/digital-health-summit-schedule march-6th-7th-2019berlin-germany

Healthcare in the 21st Century Disruptors: Non-Health Care Innovation



Healthcare in the 21st Century Disruptors: Non-Health Care Innovation



1999

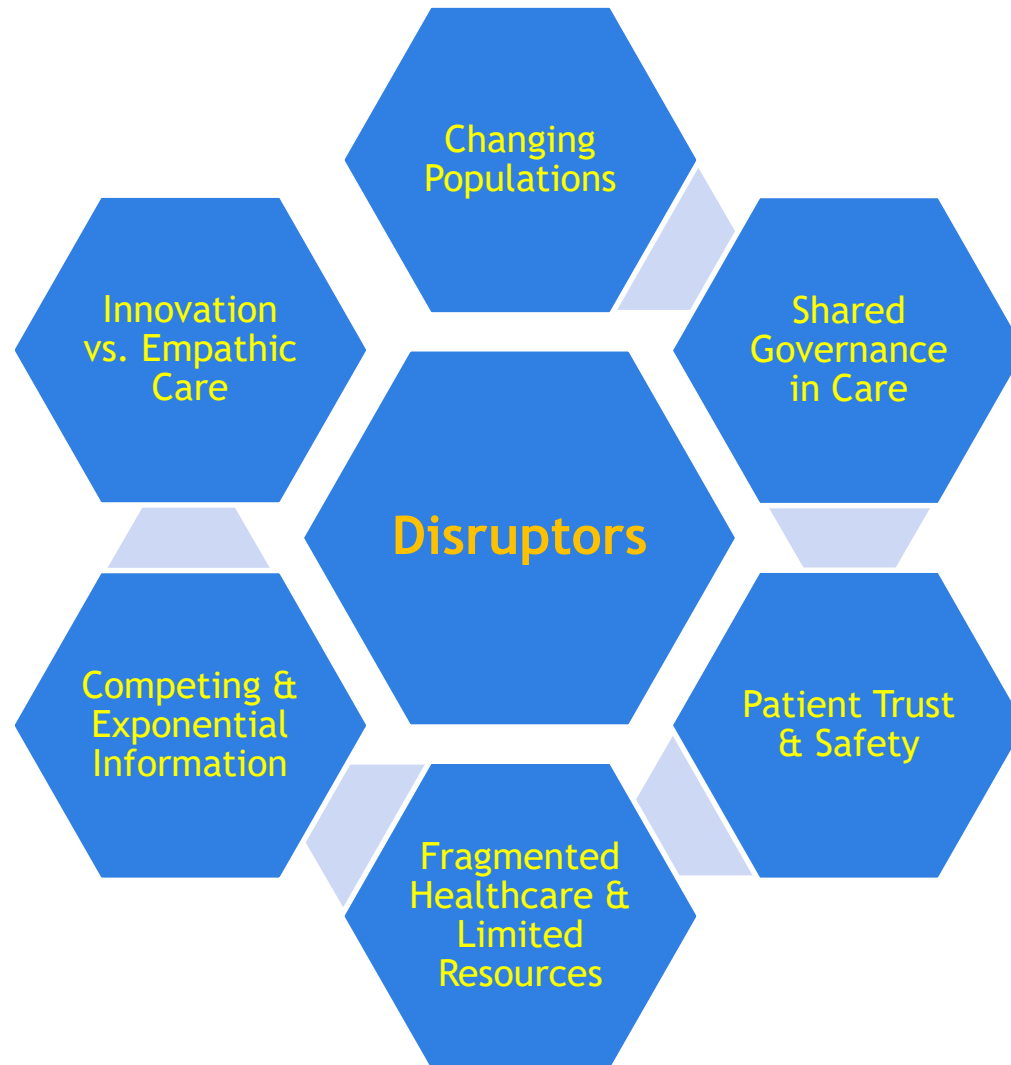
- Don't meet people from the Internet
- Don't get into strangers' car

2019

- Summon strangers from the Internet, with sole purpose of getting into their car

Comfort & Caution

Healthcare in the 21st Century: Disruptors



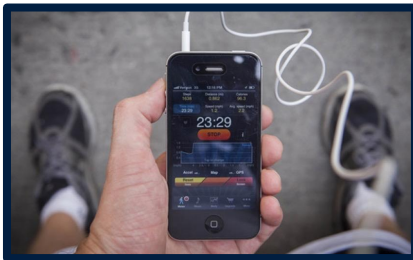
Healthcare in the 21st Century: Reshaping the Delivery of Health Care



electronicproducts.com



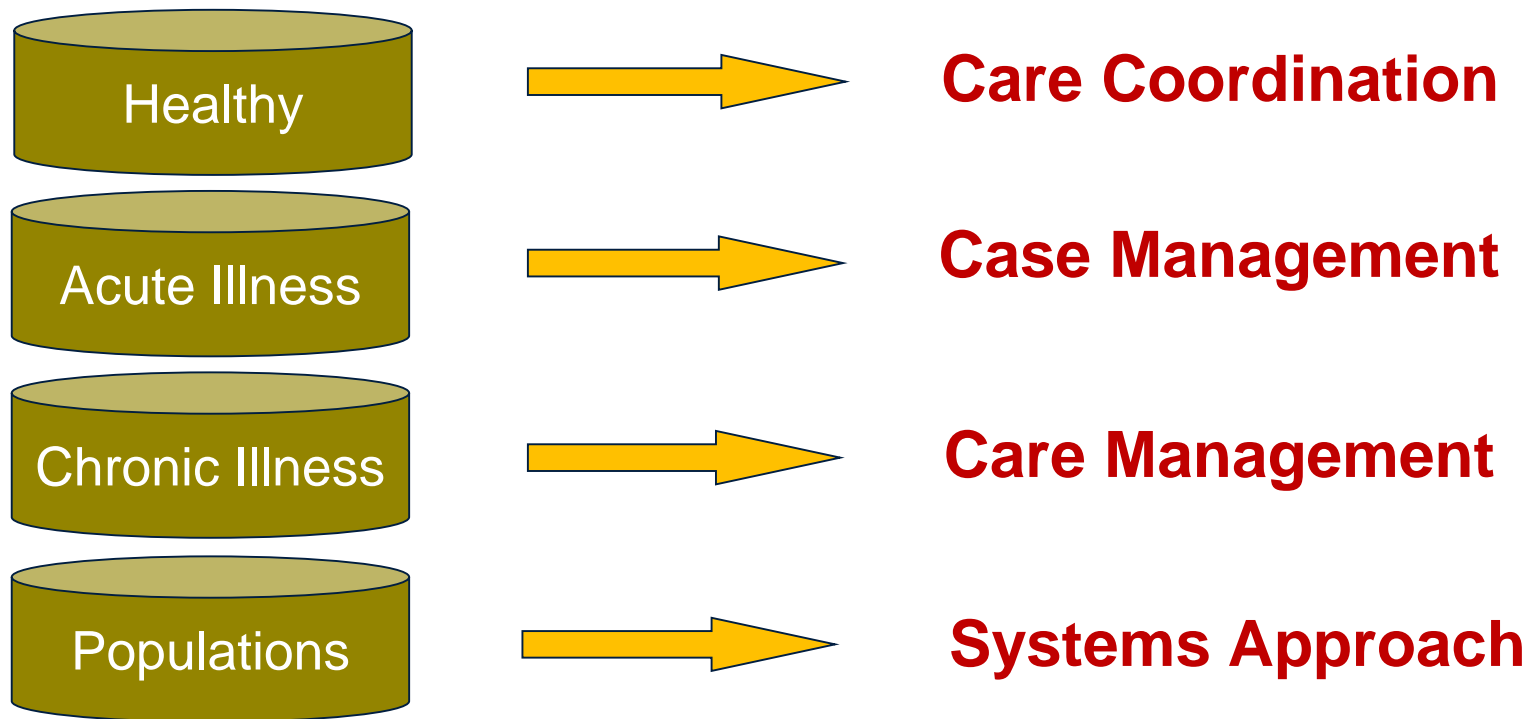
virtualrounds@jefferson.edu



ehealthreporter.com

- High quality care at an affordable cost (“triple aim”)
- Personalized yet equal
- Valued-based approach
- Wellness model
- Ambulatory and virtual services
- Coordination of care
- Embrace innovation cautiously
- Augmented (not artificial) intelligence
- Preservation of human touch

Healthcare in the 21st Century: Reshaping Approach to Delivery of Health Care



What is Population Health?

Population health is defined as “the health outcomes of a group of individuals, including the distribution of such outcomes within the group.”

(Kindig & Stoddart, 2003)

Population health “is comprised of three main components: health outcomes, health determinants, and policies.”

(Nash et al, 2016)

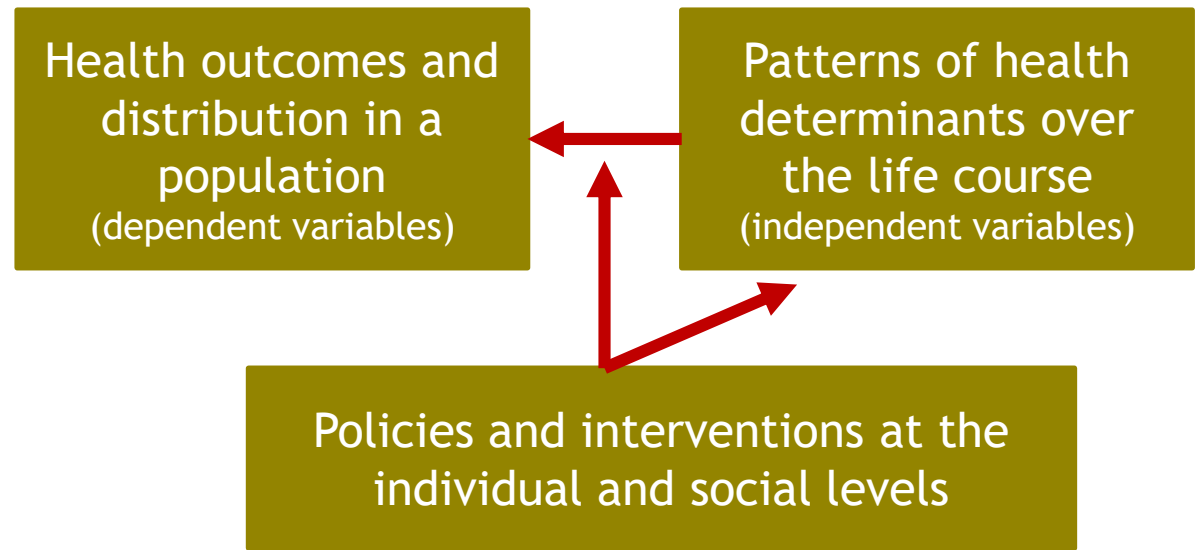


Why is Population Health Important?

“Population health brings significant health concerns into focus and addresses the way that resources can be allocated to overcome problems that drive poor health conditions in the population.”

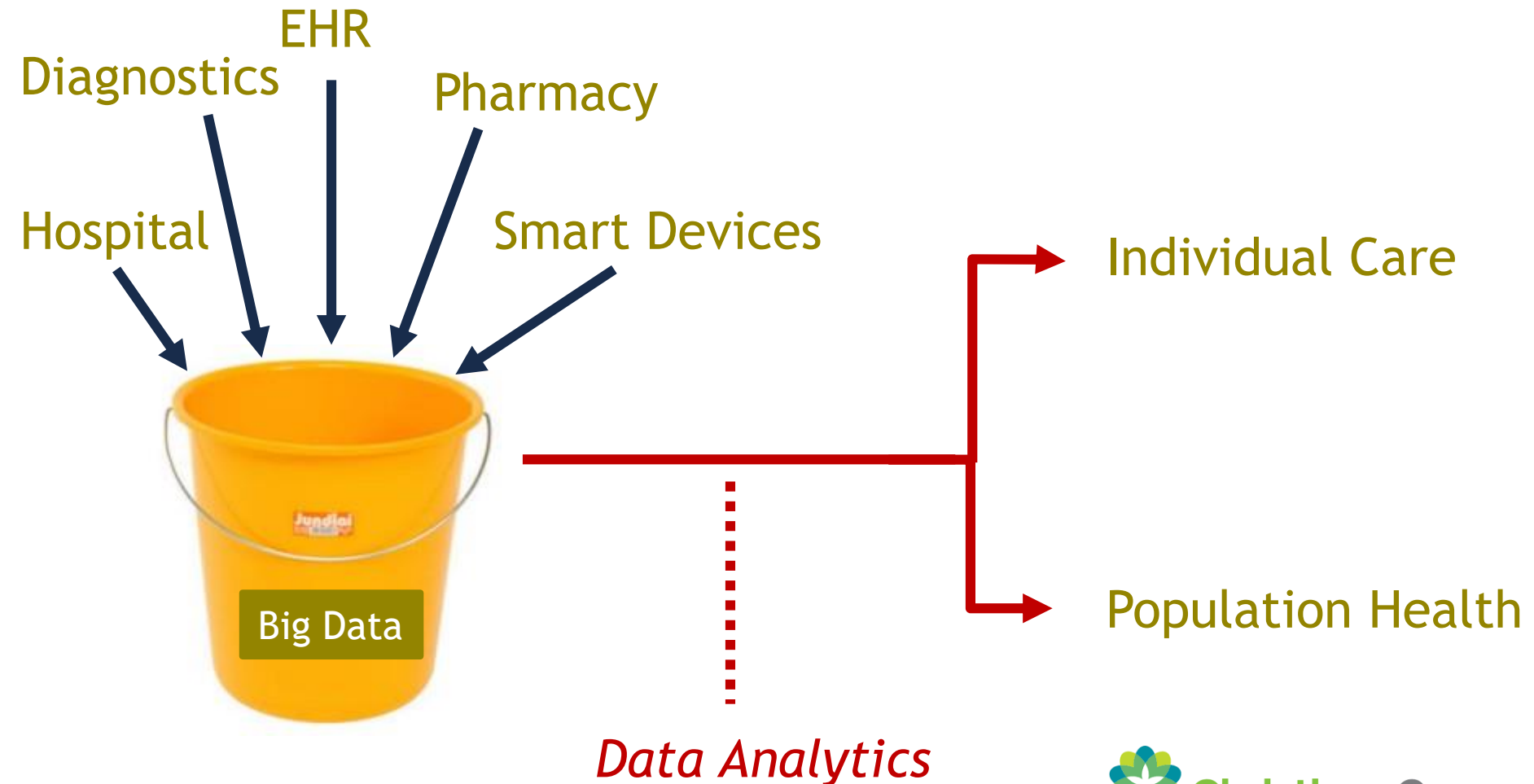
(CDC, 2019)

A Population Health Schematic

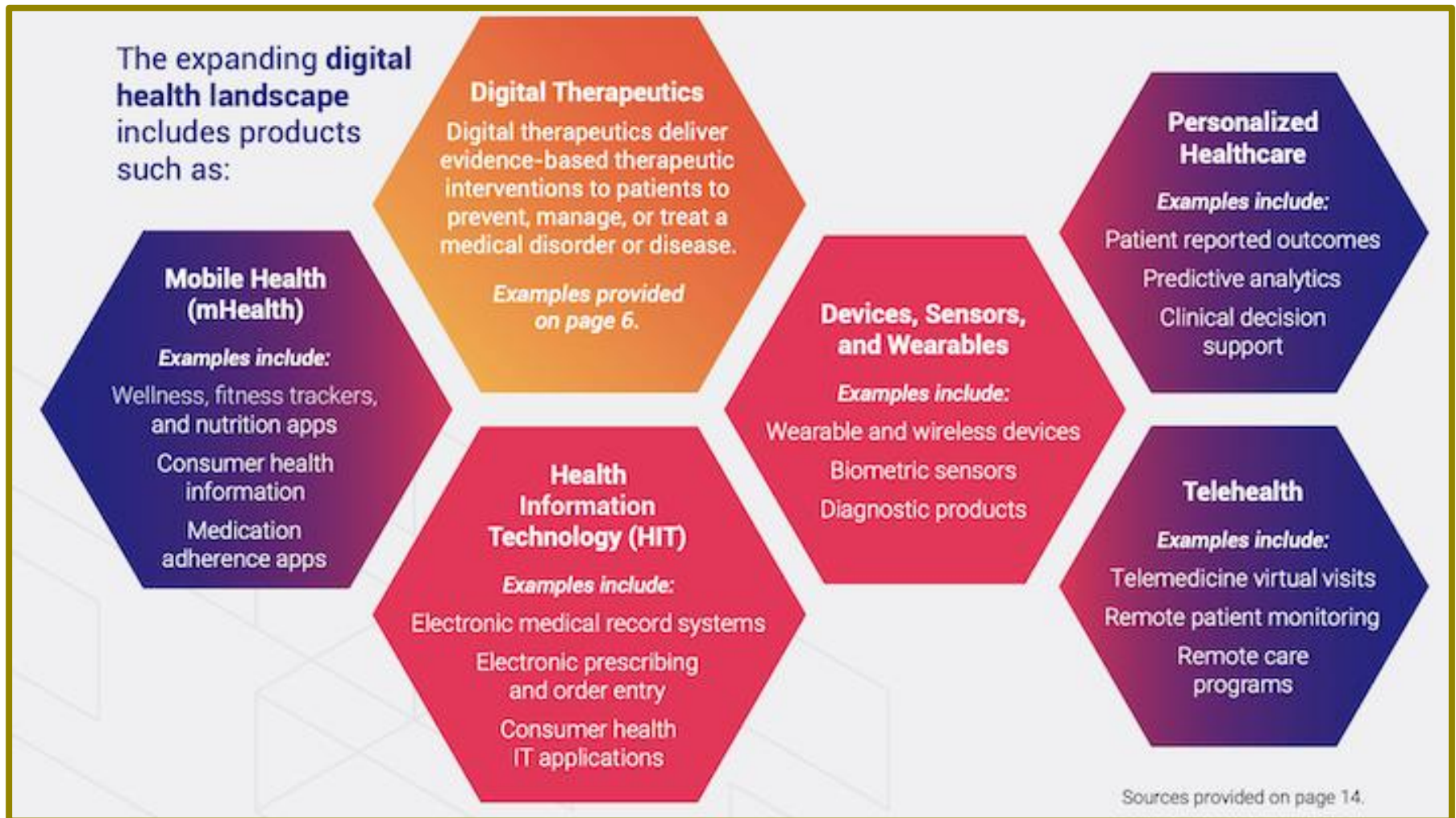


(Kindig & Stoddart, 2003)

Healthcare in the 21st Century: Reshaping the Delivery of Health Care



Healthcare in the 21st Century: Digital Health (Technology & Healthcare)



DTx Alliance

Healthcare in the 21st Century: Skills for the Future Health Care Workforce

Social Intelligence

Discipline-specific knowledge and skills

Emotional intelligence

Perseverance

Teamwork

Resilience

Communication Skills



Cultural sensitivity/Community Stewardship

Healthcare in the 21st Century: Skills for the Future Health Care Workforce

Augmented Intelligence

Empathy and compassion

Comfortability with Complexity

Creativity

Data analytics

Tolerance of Ambiguity



Leadership (Leader of Change)

Training professionals to improve health at home and around the world

Jefferson College of Population Health: Academic Programs

2 On Site Degree Programs

- PhD in Population Health Science
- Master of Public Health with dual training options:
 - Nursing
 - Medicine
 - Pharmacy
 - Law
 - Social Work



6 Population Health Research Centers



- 1889 Jefferson Center for Population Health
- Center for Population Health at Lankenau Institute for Medical Research

7 Online Degree Programs for Working Professionals Around the World



- MS or Certificate in Health Policy
- MS or Certificate in Population Health
- MS or Certificate in Population Health Intelligence
- MS or Certificate in Operational Excellence
- MS or Certificate in Healthcare Quality & Safety
- MS or Certificate in Healthcare Quality & Safety Management
- MS or Certificate in Applied Health Economics & Outcomes Research



Arigatou!

