

Economic evaluation to inform policy: methods, practice and challenges

Rita Faria

Research fellow at the Centre for Health Economics

9th May 2016 – Canon Institute for Global Studies

Presented with the support of The Great Britain
Sasakawa Foundation.





- 
- The Great Britain
SASAKAWA
FOUNDATION
ササカワ財団
- General Information
 - Activities Supported
 - Programme for Japanese Studies
 - Butterfield Awards Programme
 - Criteria for Awards
 - Application Procedure
 - Application Form
 - Annual Report
 - Links
 - Logo

Contact Us



Making a difference in UK-Japan relations



Our work: Economic evaluation

- Within-trial evaluations
- Decision-modelling
- Evidence synthesis
- And many more

Also:

- Short courses on economic evaluation.
- Distance learning programme.



Team for Economic Evaluation and Health Technology Assessment (TEEHTA)

TEEHTA undertakes a range of methodological research in economic evaluation. Also, a major activity for all members of the team is the design, conduct and analysis of applied economic evaluations. These include integrated economic and clinical randomised trials, decision analytic modelling studies and economic and statistical evaluation of observational and retrospective data sets.

Research staff

- › [Mark Sculpher](#), Professor and Director
- › [Stephen Palmer](#), Professor, Deputy Director and Head of NICE Programme
- › [Miqdad Asaria](#), Research Fellow
- › [Laura Bojke](#), Senior Research Fellow
- › [Fadi Chehadah](#), Research Fellow
- › [Karl Claxton](#), Professor
- › [Richard Cookson](#), Professor
- › [Edward Cox](#), Research Fellow
- › [Tony Culyer](#), Professor, Internal Affiliate
- › [Michael Drummond](#), Professor
- › [Ana Duarte](#), Research Fellow

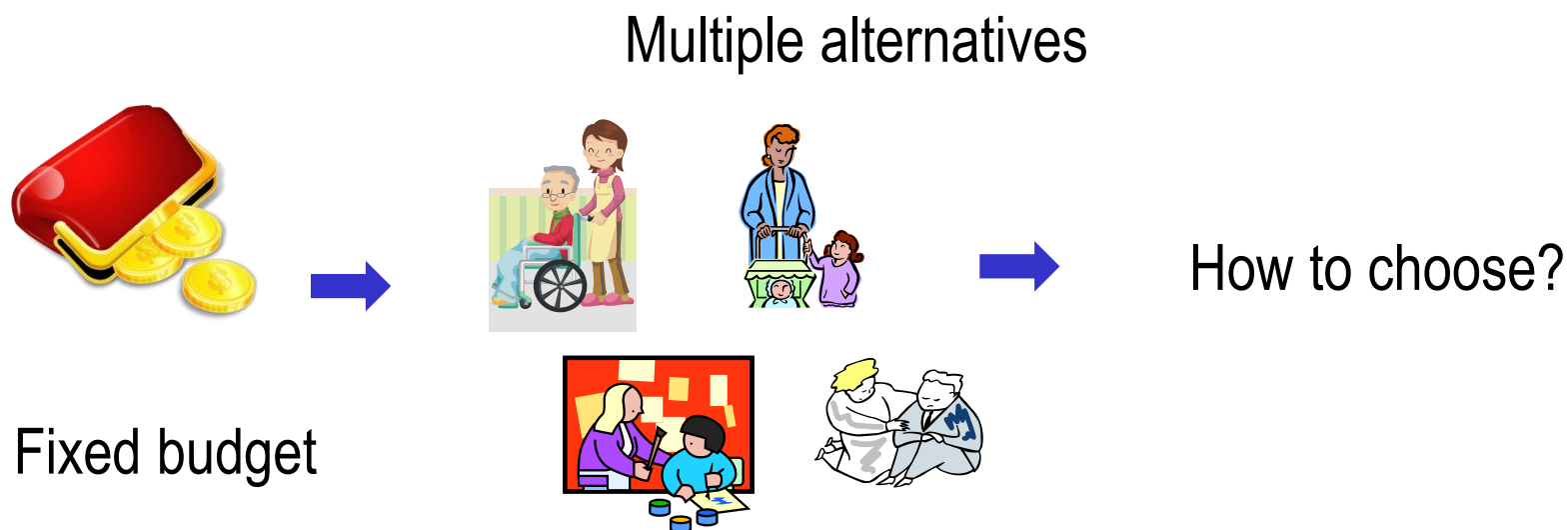
Projects

- › [Research Prioritisation](#)
- › [NICE Threshold](#)
- › [Technology assessments for NICE](#)
- › [Methodological research](#)
- › [Applied research](#)
- › [Research design service](#)
- › [The Economics Evaluation Policy Research Unit \(EEPRU\)](#) ↗

Training and workshops

- › [Decision analytic modelling for economic evaluation](#)

Economic evaluation to inform decisions in health



Opportunity cost

The cost of selecting a particular intervention measured in terms of the benefits that might have been achieved if the next best intervention were chosen

Efficiency

The use of resources to maximise the production of services.

Stages in an economic evaluation

Formulate the decision problem and the perspective

Identify interventions

Establish their effectiveness

Identify, measure and value costs and benefits

Compare benefits to their **opportunity cost**

Case study: Surgery for chronic reflux (i)

Original article

Cost-effectiveness of laparoscopic fundoplication *versus* continued medical management for the treatment of gastro-oesophageal reflux disease based on long-term follow-up of the REFLUX trial

R. Faria^{1,*}, L. Bojke¹, D. Epstein^{1,3}, B. Corbacho², M. Sculpher¹ and on behalf of the REFLUX trial group[†]

Article first published online: 17 JUN 2013

DOI: 10.1002/bjs.9190

© 2013 British Journal of Surgery Society Ltd.
Published by John Wiley & Sons, Ltd.

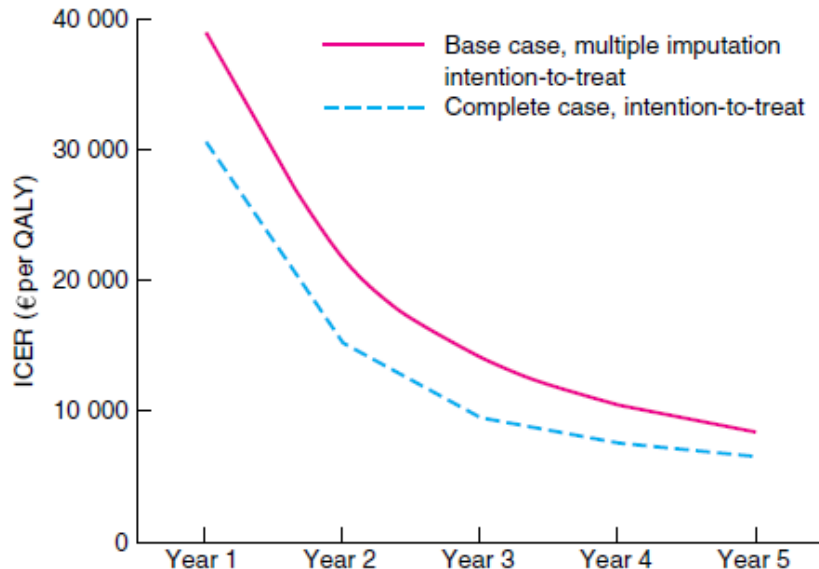
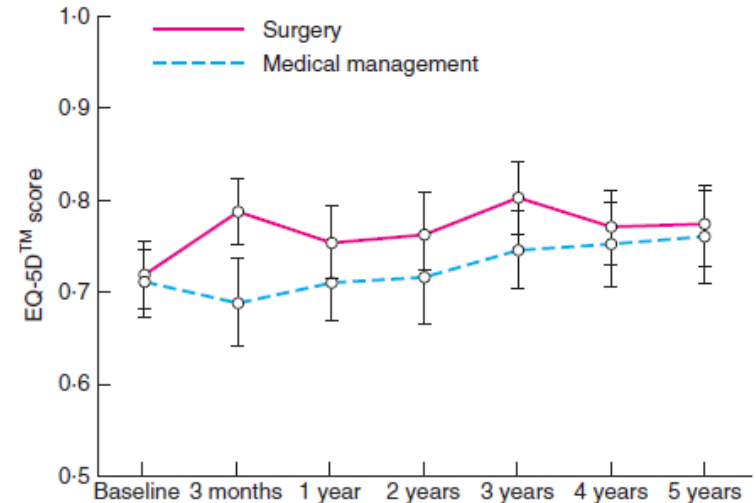
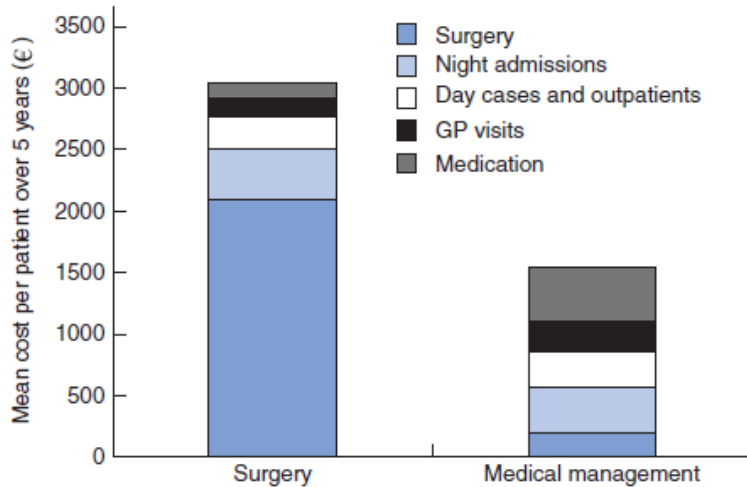
Issue



British Journal of Surgery
Volume 100, Issue 9, pages
1205–1213, August 2013

- Is laparoscopic surgery effective and cost-effective for chronic reflux?
 - Randomised controlled trial surgery vs medical management
 - Follow-up= 5 years
 - Collected health resource use and quality of life

Case study: Surgery for chronic reflux (ii)



Surgery is cost-effective.
Now recommended by NICE clinical guideline.

Areas of research

- Economic evaluation of **care and complex interventions**
 - Reablement to help people regain independence.
 - Support for carers of people with dementia.
- Measuring and valuing **carer input**.
- Use of **observational data** and single arm studies.
- Conflating **perspectives**:
 - Individual patient vs carer
 - Health care vs public sector vs private vs society
- Adapting economic evaluation to **different settings**


Evaluation of complex interventions: reablement

HS&DR - 13/01/17: Models Of Reablement Evaluation: a mixed methods evaluation of a complex intervention (The MORE project)

[Notify me](#) when this item is published

Project title	Models Of Reablement Evaluation: a mixed methods evaluation of a complex intervention (The MORE project)
Research type	Primary Research
Status	Research in progress
Start date	October 2014
Publication date	February 2018

[Search](#)

specialised nursing 

[Browse](#) | [Visit project portfolio](#)

[NIHR Journals Library](#)

[Join mailing list](#)

To receive funding alerts and other programme news, please join our mailing list.

[Sign up](#)

- Reablement helps people to adapt to their illness and maximise their level of independence by relearning skills or using equipment.
- Funded by local councils (w/ or w/o NHS involvement).
- Objectives:
 - Identify types of reablement services in the UK
 - Compare the costs and benefits of different types
- Design: prospective cohort study.

Evaluation of complex interventions: support for carers

HS&DR - 14/154/07: Evaluation of specialist nursing support for carers of people with dementia

Notify me when this item is published

Project title	Evaluation of specialist nursing support for carers of people with dementia
Research type	Primary Research
Status	Research in progress
Start date	November 2015
Publication date	February 2018 <small>This is the estimated publication date for this report, but please note that delays in the editorial review process can cause the forecast publication date to be delayed.</small>

Search

[Browse](#) | [Visit project portfolio](#)

NIHR Journals Library

Join mailing list

To receive funding alerts and other programme news, please join our mailing list.

Sign up

- Carers of people with dementia can be supported by specialist nurses.
- Specialist nurses available in some areas and funded by local councils.
- Objectives:
 - Develop postal questionnaire to collect resource use, costs and quality of life.
 - Compare costs and quality of life of carers in areas with and without specialist support.

Measuring and valuing carer input



Encyclopedia of Health Economics

2014, Pages 459–467



Valuing Informal Care for Economic Evaluation

H. Weatherly, R. Faria, B. Van den Berg

[+ Show more](#)

doi:10.1016/B978-0-12-375678-7.01413-9

[Get rights and content](#)

Abstract

Informal care is the mainstay of support for many people living in the community, particularly those with long-term care needs. Informal care does not have an explicit value to reflect the resources required to provide informal care-related activities, or the benefits of doing so. Few economic evaluations value informal care. To include informal care in economic evaluations requires methods to measure and value the benefits and costs of informal care. This article reviews the methods used for measuring and valuing informal care in monetary and nonmonetary terms.

Adapting economic evaluation to different settings



The Canon Institute for Global Studies

[Home](#)

[Research Areas](#)

[Research Fellows](#)

[Events](#)

[Columns & Papers](#)

[About CIGS](#)

[Home](#) > [Columns & Papers](#) > [Macroeconomics](#) > [The New Era of Health Technology Assessment - A surge of new 'Black Ships' -](#)

Columns & Papers

- ▶ Macroeconomics
- ▶ Foreign Affairs & National Security
- ▶ Natural Resources, Energy & Environment
- ▶ Overseas Information Analysis /

2016.02.19

[Macroeconomics]

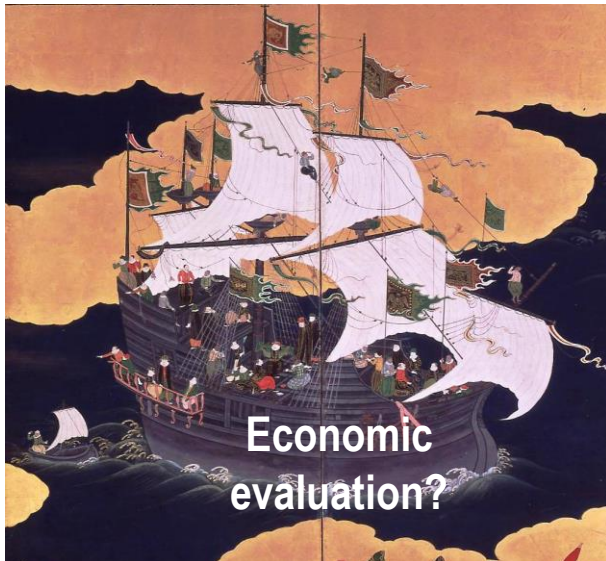
Column

The New Era of Health Technology Assessment - A surge of new 'Black Ships' -

[Print page](#)

Research Director
[Isao Kamae](#)

[Expertise]
Health Policy and
Technology Assessment



- Is economic evaluation a new 'Black Ship'?
- How can economic evaluation help Japan make decisions?

Thank you
ありがとうございました

rita.nevesdefaria@york.ac.uk